



Installation Guide

WECO E-Commerce™ **7.00**






SAP® Certified
Powered by SAP NetWeaver®

SAP® Certified
Integration with Applications on SAP HANA®

Release 7.00

Version 1.0 Date 12/17/2015

Icons

Icon	Meaning
	Caution
	Example
	Advise
	Source Code
	Tipp

Copyright

Copyright (©) 2010-2016 WECO Software GmbH. All rights reserved.

No part of this publication may be reproduced or transmitted in any form or for any purpose without the express permission of WECO Software GmbH. The information contained herein may be changed without prior notice.

WECO E-Commerce Sales & Service, WECO E-Commerce Procurement and WECO E-Commerce Mobile are trademarks of WECO Software GmbH.

SAP, SAP ERP, SAP NetWeaver, ABAP, BAPI and other SAP products and services mentioned herein as well as their respective logos are trademarks or registered trademarks of SAP AG in Germany or an SAP affiliate company.

All other product and service names mentioned are the trademarks of their respective companies. Data contained in this document serves informational purposes only.

Index

Index	3
Introduction	4
SAP System Requirements	4
Content of the WECO installation packages	4
WECO Shared Components	4
WECO Web Components	4
WECO Core Components	4
Deployment Options	4
1-System Deployment	5
2-System Deployment	6
Software Download	7
Installation	8
Check Prerequisites	8
Preparation	8
Save Customer z-views and z-controllers	8
Add-On Installation	8
1-System Deployment	8
2-System Deployment	8
Deployment independent steps	10
Installation Verification	10
Import of the template configuration	11
1-System Deployment	11
2-System Deployment	11
Post Installation Activities	12
Installation of Support Packages	12
Development System only	12
Number Range for User Requests (Core System only)	13
Necessary post installation activities in case of upgrade to 7.00	13
Licensing	13
Glossary	14

Introduction

The following documentation describes the necessary activities in order to install WECO E-Commerce 7.00.

SAP System Requirements

SAP Component	Minimum Release	SP Level
SAP_BASIS	700	16 (SAPKB70016)
SAP_ABA	700	16 (SAPKA70016)
SAP_APPL	600	03 (SAPKH60003)

- ➡ Please make sure, that your system(s) fulfill the minimum system requirements **before** you start the installation.

Content of the WECO installation packages

WECO E-Commerce contains the following modules:

- Sales & Service
- Procurement
- Mobile

WECO E-Commerce is shipped within 3 packages (.SAR files) which can be installed on top of SAP using the SAP Add-On Installation Tool (SAINT).

The split into 3 packages is necessary in order to support the two deployment options outlined below.

WECO Shared Components

Contains components which are shared among the applications.

WECO Web Components


Contains the Web related components like BSP applications which are necessary for the frontend application.

WECO Core Components

Contains components like the ERP API's, catalogue maintenance and configuration.

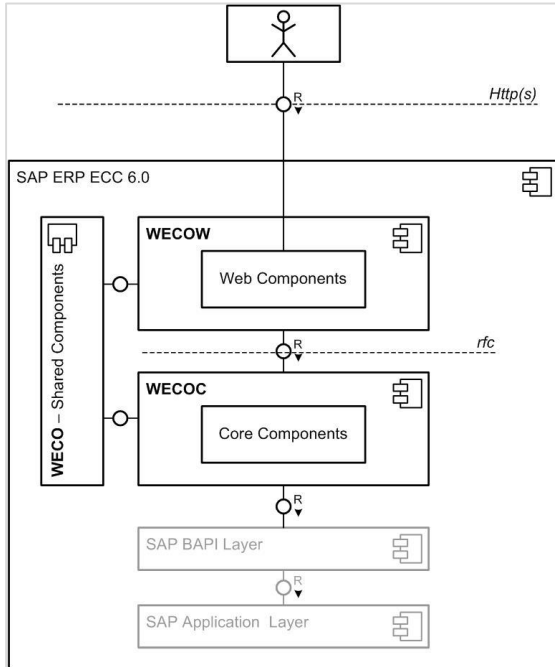
Deployment Options

WECO E-Commerce can be set up either in a 2-system landscape (Backend components run in the Core System and frontend components run on Web AS) or in a 1-system landscape (Core system and Web AS are physically the same system).

-  If you decide to start with a 1-system deployment you can still switch to a 2-system deployment later on - if necessary.

1-System Deployment

All WECO Components are installed on the same system. You typically choose this deployment scenario if the volume (transaction wise) of expected business is not significant, e.g. you want to enable WECO E-Commerce for a small number of customers.

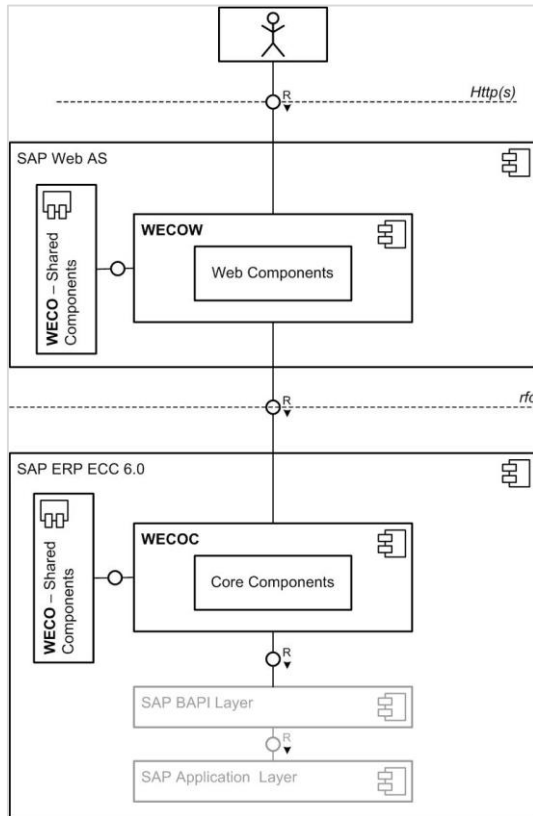


SAP Components required: SAP_BASIS, SAP_ABA, SAP_APPL

2-System Deployment

In a 2-System deployment the WECO Components are distributed among the ERP Core System and the Web Application Server. This reduces the load on the ERP System because most of the business is handled on the Web Application Server.

You typically choose this deployment scenario if the volume (transaction wise) of expected business is significant, e.g. you want to enable WECO E-Selling for a large number of customers.



SAP Components required on Web AS: SAP_BASIS, SAP_ABA
 SAP Components required on ERP: SAP_BASIS, SAP_ABA, SAP_APPL

WECO Component distribution 2-System deployment

Component	SAP ERP	SAP Web AS
WECO Shared Components	X	X
WECO Web Components		X
WECO Core Components	X	

Software Download

After signing the software contract you will receive an e-mail that provides you with your credentials for the WECO support site.

You can download the installation packages from the WECO support site using the following URL:
<https://support.weco.at/download/customer>

Hint:

Path /customer is used as an example in this document and has to be replaced by your own company token. You will find your individual download link in the e-mail.

WECOHS00.WECO.AT						
Contents of the /download/customer/WECO_E_Commerce_700_AOI/ folder						
Please choose a file to view or download.						
Download File Description	Bytes	KB	Type	Date	Time	
package_codes_release_700.txt	59	1K	Text Document	07.12.2015	16:29:41	
weco_e-commerce_700_install_core_components.zip	13 228 222	12918K	Compressed (zipped) Folder	07.12.2015	16:24:16	
weco_e-commerce_700_install_customizing_core.zip	862 669	842K	Compressed (zipped) Folder	17.12.2015	12:17:31	
weco_e-commerce_700_install_customizing_web.zip	61 216	60K	Compressed (zipped) Folder	17.12.2015	11:41:44	
weco_e-commerce_700_install_shared_components.zip	8 627 362	8425K	Compressed (zipped) Folder	07.12.2015	16:23:57	
weco_e-commerce_700_install_web_components.zip	20 384 698	19907K	Compressed (zipped) Folder	07.12.2015	16:22:40	

After providing your credentials you can access the download directory where you can find the .ZIP files as well as the latest Installation Guide.

Please download the .ZIP files to your local machine for further processing (clicking on the file will start the download process).

After the download extract the .SAR files from the ZIP archives.




Please note that the software download is only permitted for customer staff members within the customer's company network. You may neither hand on access data nor transfer WECO software to 3rd parties.

Installation

Check Prerequisites


Please make sure that the minimum SAP component requirements are met.

 Basically, with WECO E-Commerce 7.00 the Add-On is removable. If you plan to uninstall the Add-On, please **get in contact with the WECO support before you start**.

Preparation

Save Customer z-views and z-controllers

It is not possible to directly upgrade from an older version (lower than 6.00) of WECO E-Commerce to the current release 7.00. The upgrade is technically executed via a new installation of the software.

 The installation of release 7.00 wipes out customer owned Z-Views and Z-Controllers. Therefore the following activities are mandatory:

Please save your custom BSP views and controllers (aka Z-Views, Z-Controller) using report `/WECO/W_DOWNL_BSP_VIEWS` **before you start the installation of the new WECO Release 7.00**. The report exports all your custom views and controllers to a local directory on your PC. Having finished the installation please use report `/WECO/W_UPLOAD_BSP_VIEWS` to reimport the views and controllers again → Necessary post installation activities in case of upgrade to 7.00_

Add-On Installation

The upload and installation of the WECO Software is done via transaction **SAINT** in SAP. You have to run the transaction in client 000.

Depending on the deployment scenario, you have to upload following files:

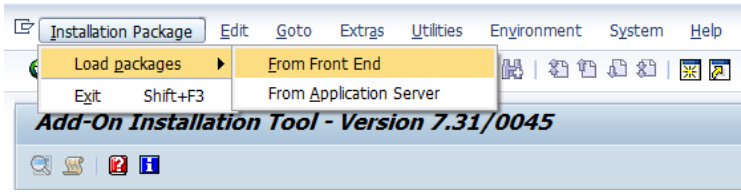
1-System Deployment

Upload **all .SAR files** in transaction SAINT to your ERP System.
Installable Add-On packages (SAINT):

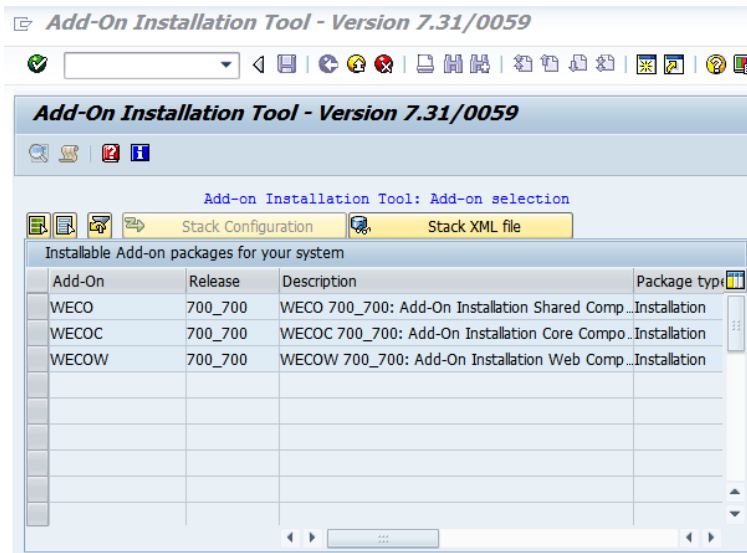
WECO, WECOC, WECOW

2-System Deployment

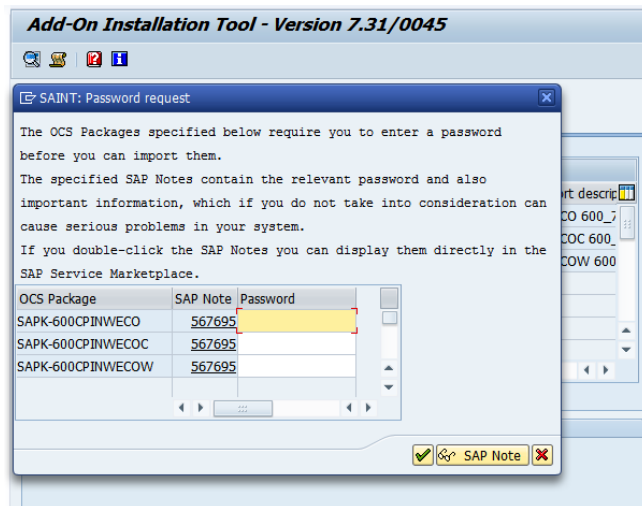
- **ERP System**
Load file "WECO_EC_700_Inst_Core_Comp.SAR" and file "WECO_EC_700_Inst_Shared_Comp.SAR" into you SAP ERP system.
Installable Add-On packages (SAINT):
WECO, WECOC
- **Web Application Server**
Load file "WECO_EC_700_Inst_Shared_Comp.SAR" and file "WECO_EC_700_Inst_Web_Comp.SAR" into your SAP Web Application server.
Installable Add-On packages (SAINT):
WECO, WECOW



After a successful upload, the packages are shown as “installable”.



Before the installation process starts, you will be prompted to provide a password per package: The passwords will be provided along with your software license within your download directory.



For detailed upload instructions please follow the online documentation in transaction SAINT. You can also put the files directly on the application server. Make sure that the files are located in your EPS Inbox (...)\sapmnt\trans\eps\in). Please note, that the OCS package names are different from the file names. In case you are not familiar with SAINT, please contact your SAP Basis support team.

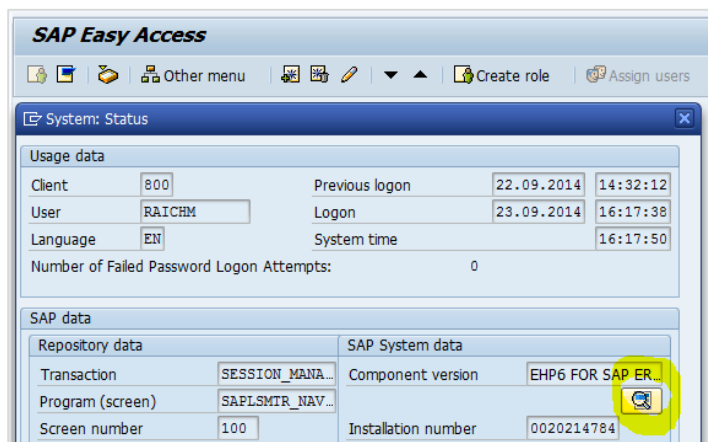
Deployment independent steps

Having loaded the packages into the respective servers, SAINT contains the installable Add-On's. Independent from the deployment scenario please **process all Add-On's within one installation process**. If this is not possible for whatever reasons make sure that Add-On WECO is processed first. Processing the other Add-On's first is not possible because of import pre-conditions delivered with the Add-On's and would result in errors because of dependencies.

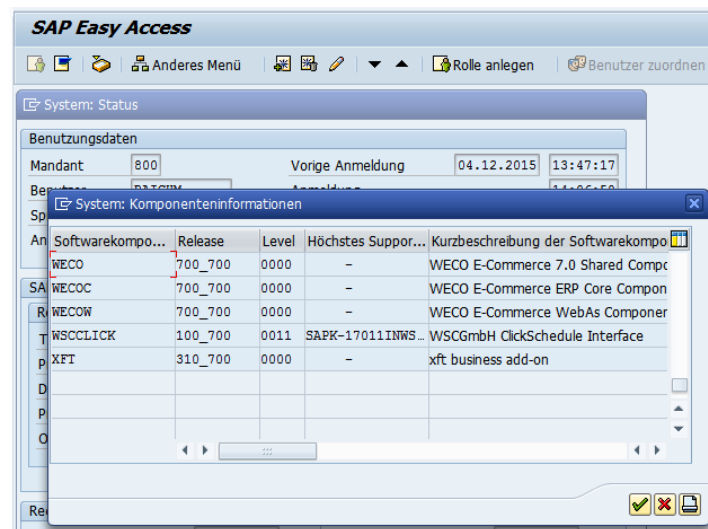
We recommend, that you enable "Abap/Screen" generation within the SAINT settings.

Installation Verification

Once the WECO Add-On's are successfully installed you can verify that via the *System->Status* information.



Using the small button in the SAP System data area you can display all installed components and SP levels.



In a **1-System** deployment all 3 components have to show up; in a **2-System** deployment the WECO component has to show up on both systems, whereas the WECOC component must show up on the ERP system and the WECOW component on the Web As System.

Import of the template configuration

WECO E-Commerce is shipped as installable Add-On. Together with the software we also ship template configuration in order to speed up the implementation project.

Configuration settings are shipped via 2 transport orders that you need to import.

You can find the transport files in the customer download folder on the WECO support server (see section *Software Download*):

WECO_E-Commerce_700_Install_Customizing_Core.zip

WECO_E-Commerce_700_Install_Customizing_Web.zip

Unzip the files and add the transport files to the import queue of the respective systems. You have to import the transports not only on the development systems, but also on your production systems. In case you feel not familiar with the TMS process, contact your SAP Basis support team.



Since the content is client dependent **set the import client accordingly** before executing the import.

1-System Deployment

Import both transport orders into your system.

2-System Deployment

- **ERP System**
Import CM1K900078 into the system.
- **Web Application Server**
Import CM1K900077 into the system.

Post Installation Activities

Installation of Support Packages

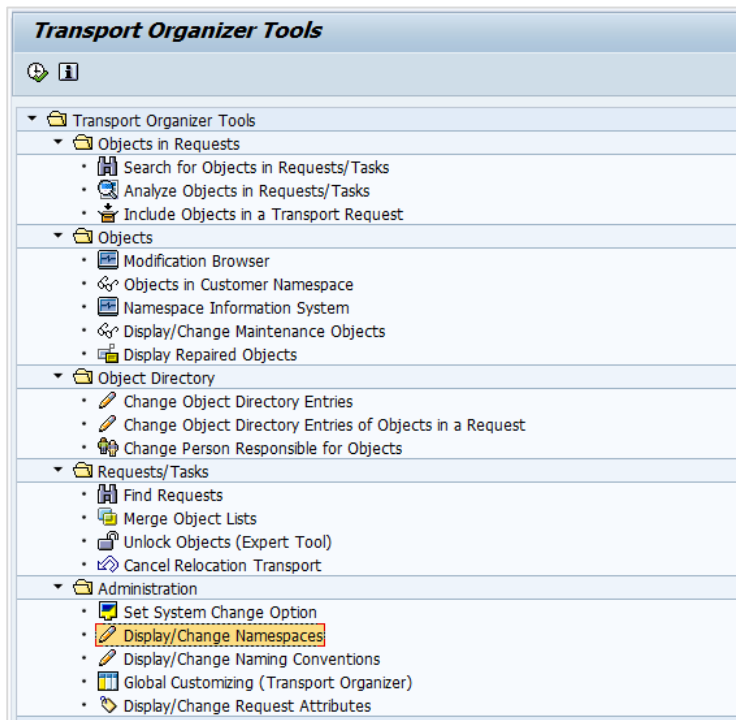
Download the latest support package from the WECO support server and install it accordingly. WECO support packages are cumulative, i.e. you only have to install the most recent support package. You can find a separate documentation to the topic "Installation of Support Packages" on the WECO support server.

Development System only

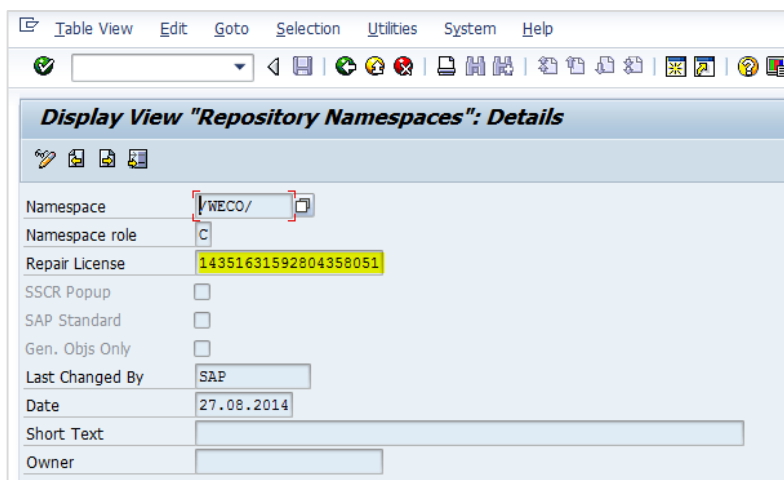
Please check the existence of the namespace **/WECO/** in your SAP development system. (CORE and WAS as well in case of 2 system landscape).

The namespace is necessary for creating customer own Business Server Page views and for implementing Hot-fixes.

Use transaction SE03:



The entry should look like this:



The repair license key is: **14351631592804358051**

In case the entry does not exist – create it.

Number Range for User Requests (Core System only)

Create the number range for user registration requests on the ERP (Core) system:

Transaction: SNUM

Object: /WECO/URQ

Number range 01, Internal numbering

From No. 1000 **To No.** 1000000

Necessary post installation activities in case of upgrade to 7.00

After successful installation you can reimport the backup of your custom BSP views and controllers into the development system using report /WECOM/W_UPLOAD_BSP_VIEWS.

Afterwards create a transport request to recreate the BSP Views and Controllers in the subsequent systems of your SAP landscape. Use transaction SE80 and navigate to BSP-Application „/WECO/W_SHP1“. Mark all custom BSP views and controllers in the tree on the left-hand side. Use the right mouse button „write transport request“ to include the marked objects in the transport request you have just created.

Licensing

In order to enable the WECO software components you need to request a license key. You can do that online via the WECO support tool (support.weco.at). Please provide you SAP installation number within your request.

You will receive a notification once your request has been processed; in addition to that you will find a license transport order in your customer specific download folder. Please download and import the transport request. You have to import the transport throughout your whole system landscape where WECO components are deployed.

Glossary

Abbreviations & Terms used in this document

BSP	SAP Business Server Pages are a SAP technology, which allows to develop dynamic web application with ABAP.
Core System	ERP System on which SAP SD and MM are running
IMG	WECO Implementation Guide
View	A BSP View is part of SAP BSP and used to dynamically generate HTML code.
Web AS	SAP Web Application Server aka SAP_BASIS. All BSP components run on this component.
SAR File	Software archive – SAP specific file format used for distribution and installation of Add-Ons.
Sandbox System	A dedicated system which is used to test specific functionality. It is reset afterwards.
Support Package	Installable package, which contains software corrections for WECO components