



Installation Guide

WECO E-Commerce™ **8.00**






SAP® Certified
Powered by SAP NetWeaver®

SAP® Certified
Integration with Applications on SAP HANA®

Release 8.00

Version 1.1 Date 02/22/2019

Icons

| Icon | Meaning |
|---|-------------|
|  | Caution |
|  | Example |
|  | Advise |
|  | Source Code |
|  | Tipp |

Copyright

Copyright (©) 2010-2019 WECO Software GmbH. All rights reserved.

No part of this publication may be reproduced or transmitted in any form or for any purpose without the express permission of WECO Software GmbH. The information contained herein may be changed without prior notice.

WECO E-Commerce Sales & Service, WECO E-Commerce Procurement and WECO E-Commerce Mobile are trademarks of WECO Software GmbH.

SAP, SAP ERP, SAP NetWeaver, ABAP, BAPI and other SAP products and services mentioned herein as well as their respective logos are trademarks or registered trademarks of SAP AG in Germany or an SAP affiliate company.

All other product and service names mentioned are the trademarks of their respective companies. Data contained in this document serves informational purposes only.

Index

| | |
|---|----|
| Index | 3 |
| Introduction..... | 5 |
| SAP System Requirements | 5 |
| Content of the WECO installation packages | 5 |
| WECO Shared Components..... | 5 |
| WECO Web Components | 5 |
| WECO Core Components..... | 5 |
| Deployment Options..... | 5 |
| 1-System Deployment | 6 |
| 2-System Deployment | 7 |
| Software Download..... | 8 |
| Installation | 9 |
| Check Prerequisites..... | 9 |
| Preparation..... | 9 |
| Save Customer Z-views and Z-controllers..... | 9 |
| Save Enhancements..... | 9 |
| Add-On Installation..... | 9 |
| 1-System Deployment | 10 |
| 2-System Deployment | 10 |
| Deployment independent steps..... | 11 |
| Installation Verification..... | 11 |
| Import of the template configuration | 13 |
| 1-System Deployment | 13 |
| 2-System Deployment | 13 |
| Post Installation Activities..... | 14 |
| Installation of Support Packages..... | 14 |
| Development System only | 14 |
| Number Range for User Requests (Core System only) | 15 |
| Necessary post installation activities in case of upgrade to 8.00 | 15 |
| Import of customer Z-views and Z-controllers..... | 15 |
| Restore Enhancements | 15 |
| Checking SAP message log objects for WECO..... | 16 |
| Publishing of Catalogues | 16 |
| Publishing of Offline Modus Data..... | 16 |
| Redefine Root Views to V0 | 16 |
| Migrate Webuser Database Table..... | 17 |
| Update Apache Solr Schema File | 17 |
| Update SEO htaccess file..... | 17 |
| Migrate manual ship-to addresses to new address book | 17 |
| Update / Generate Authorization Roles..... | 18 |

Optional: Using Address Dropdown in Basket 18

Licensing 18

Glossary 20

Introduction

The following documentation describes the necessary activities in order to install WECO E-Commerce 8.00.

SAP System Requirements

| SAP Component | Minimum Release | SP Level |
|---------------|-----------------|-----------------|
| SAP_BASIS | 700 | 16 (SAPKB70016) |
| SAP_ABA | 700 | 16 (SAPKA70016) |
| SAP_APPL | 600 | 03 (SAPKH60003) |

- Please make sure, that your system(s) fulfill the minimum system requirements **before** you start the installation.

Content of the WECO installation packages

WECO E-Commerce contains the following modules:

- Sales & Service
- Procurement
- Mobile

WECO E-Commerce is shipped within 3 packages (.SAR files) which can be installed on top of SAP using the SAP Add-On Installation Tool (SAINT).

The split into 3 packages is necessary in order to support the two deployment options outlined below.

WECO Shared Components

Contains components which are shared among the applications.

WECO Web Components

Contains the Web related components like BSP applications which are necessary for the frontend application.

WECO Core Components

Contains components like the ERP API's, catalogue maintenance and configuration.

Deployment Options

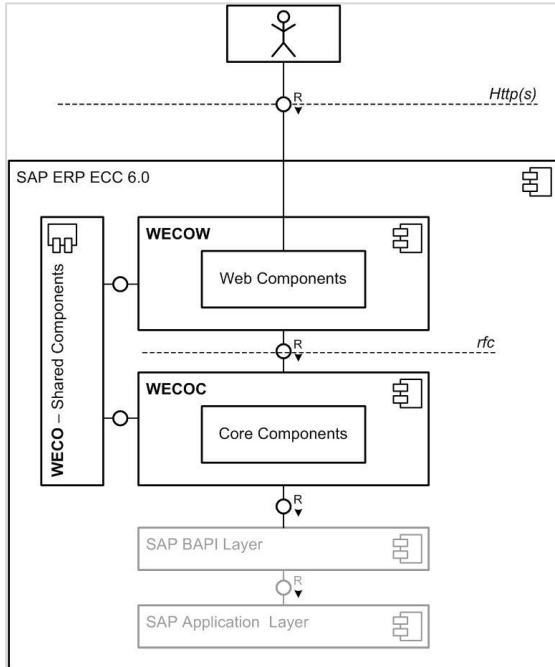
WECO E-Commerce can be set up either in a 2-system landscape (Backend components run in the Core System and frontend components run on Web AS) or in a 1-system landscape (Core system and Web AS are physically the same system).



If you decide to start with a 1-system deployment you can still switch to a 2-system deployment later on - if necessary.

1-System Deployment

All WECO Components are installed on the same system. You typically choose this deployment scenario if the volume (transaction wise) of expected business is not significant, e.g. you want to enable WECO E-Commerce for a small number of customers.

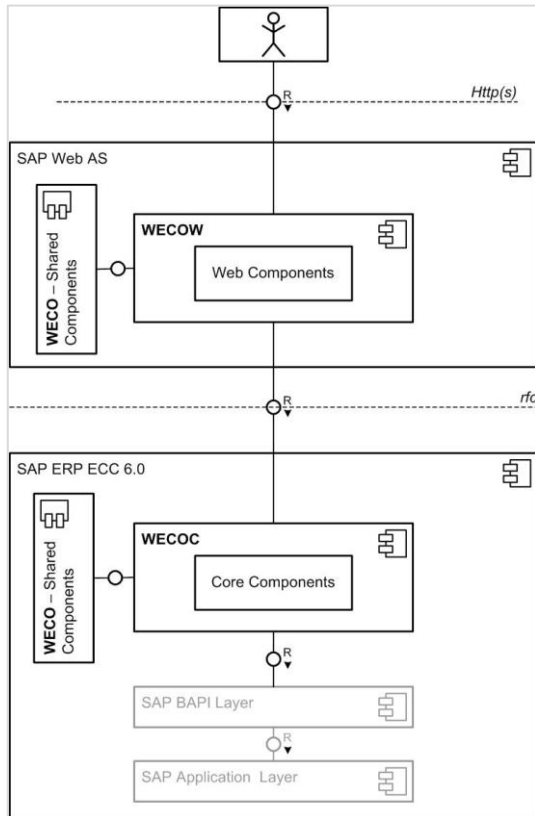


SAP Components required: SAP_BASIS, SAP_ABA, SAP_APPL

2-System Deployment

In a 2-System deployment the WECO Components are distributed among the ERP Core System and the Web Application Server. This reduces the load on the ERP System because most of the business is handled on the Web Application Server.

You typically choose this deployment scenario if the volume (transaction wise) of expected business is significant, e.g. you want to enable WECO E-Selling for a large number of customers.



SAP Components required on Web AS: SAP_BASIS, SAP_ABA
 SAP Components required on ERP: SAP_BASIS, SAP_ABA, SAP_APPL

WECO Component distribution 2-System deployment

| Component | SAP ERP | SAP Web AS |
|------------------------|---------|------------|
| WECO Shared Components | X | X |
| WECO Web Components | | X |
| WECO Core Components | X | |

Software Download

After signing the software contract you will receive an e-mail that provides you with your credentials for the WECO support site.

You can download the installation packages from the WECO support site using the following URL:
<https://support.weco.at/download/customer>

Hint:

Path /customer is used as an example in this document and has to be replaced by your own company token. You will find your individual download link in the e-mail.

Contents of folder /download/customer/WECO_E_Commerce_800_Installation/

Please choose a file to view or download.

| Download File Description | KB | Type | Date | Time |
|---|--------|---------------|------------|----------|
| package_codes_release_800.txt | 1K | Text Document | 05.09.2018 | 13:23:02 |
| weco_e_commerce_800_install_core_components.zip | 14643K | ZIP File | 05.09.2018 | 13:20:36 |
| weco_e_commerce_800_install_customizing_core.zip | 1463K | ZIP File | 05.09.2018 | 11:58:03 |
| weco_e_commerce_800_install_customizing_web.zip | 88K | ZIP File | 05.09.2018 | 11:57:51 |
| weco_e_commerce_800_install_shared_components.zip | 11519K | ZIP File | 05.09.2018 | 13:20:45 |
| weco_e_commerce_800_install_web_components.zip | 24649K | ZIP File | 05.09.2018 | 13:20:52 |

Warning: You must have prior authorization to access this download page. All connections are logged and monitored. By connecting to this system you fully consent to all monitoring. Unauthorized access or downloads will be prosecuted to the full extent of the law.

After providing your credentials you can access the download directory where you can find the .ZIP files as well as the latest Installation Guide.

Please download the .ZIP files to your local machine for further processing (clicking on the file will start the download process).

After the download extract the .SAR files from the ZIP archives.




Please note that the software download is only permitted for customer staff members within the customer's company network. You may neither hand on access data nor transfer WECO software to 3rd parties.

Installation

Check Prerequisites


Please make sure that the minimum SAP component requirements are met.

 Basically, with WECO E-Commerce 8.00 the Add-On is removable. If you plan to uninstall the Add-On, please **get in contact with the WECO support before you start**.

Preparation

Save Customer Z-views and Z-controllers

It is not possible to directly upgrade from an older version (lower than 7.00) of WECO E-Commerce to the current release 8.00. The upgrade is technically executed via a new installation of the software.

 The installation of release 8.00 wipes out customer owned Z-Views and Z-Controllers. Therefore the following activities are mandatory:

Please save your custom BSP views and controllers (aka Z-Views, Z-Controller) using report `/WECOW_DOWNL_BSP_VIEWS` **before you start the installation of the new WECO Release 8.00.**

Execute the report for following BSP applications:

- `/WECOW_SHP1`
- `/WECOW_EMAIL`
- `/WECO/C_EMAIL`
- `/WECO/X_CKEDITOR`

The report exports all your custom views and controllers to a local directory on your PC. Having finished the installation please use report `/WECO/X_UPLOAD_BSP_VIEWS` to reimport the views and controllers again → Necessary post installation activities in case of upgrade to 8.00.

Save Enhancements

Starting with WECO E-Commerce Release 8.00 enhancements for BSP Runtime and SAP variant configuration will no longer be provided by default. They will be deleted during an installation.

Therefore please save the following enhancements **before you install release 8.00.**

- Enhancement `/WECOW_BSP_RUNTIME_SEO`
Class `CL_BSP_RUNTIME`, Method `ON_REQUEST_LEAVE` (End)
- Enhancement `/WECO/SAPCONFIG_LANGU`
Function module `CEIO_SET_OPTIONS` (End)
- Enhancement `/WECO/SAPCONFIG_CONSTR`
Function module `CEIO_DDB_HAS_VALUES_INTERNAL` (End)

After a successful installation you can implement the enhancements in your Z-namespace again.

Add-On Installation

The upload and installation of the WECO Software is done via transaction **SAINT** in SAP. You have to run the transaction in client 000.

Depending on the deployment scenario, you have to upload following files:

1-System Deployment

Upload **all .SAR files** in transaction SAINT to your ERP System.

Installable Add-On packages (SAINT):

WECO, WECOC, WECOW

2-System Deployment

- **ERP System**

Load file “WECO_EC_800_Inst_Core_Comp.SAR” and file “WECO_EC_800_Inst_Shared_Comp.SAR” into you SAP ERP system.

Installable Add-On packages (SAINT):

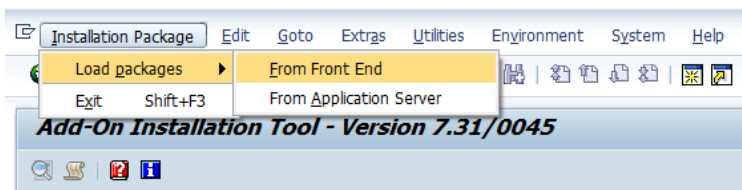
WECO, WECOC

- **Web Application Server**

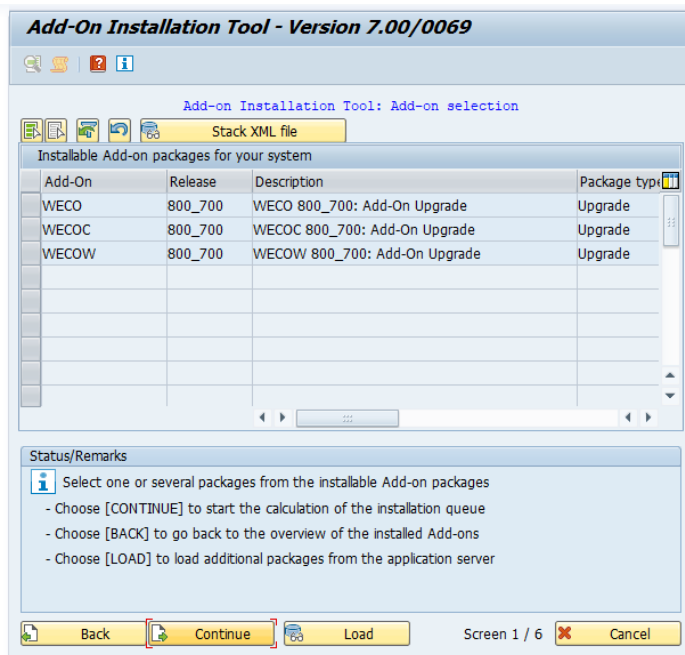
Load file “WECO_EC_800_Inst_Shared_Comp.SAR” and file “WECO_EC_800_Inst_Web_Comp.SAR” into your SAP Web Application server.

Installable Add-On packages (SAINT):

WECO, WECOW

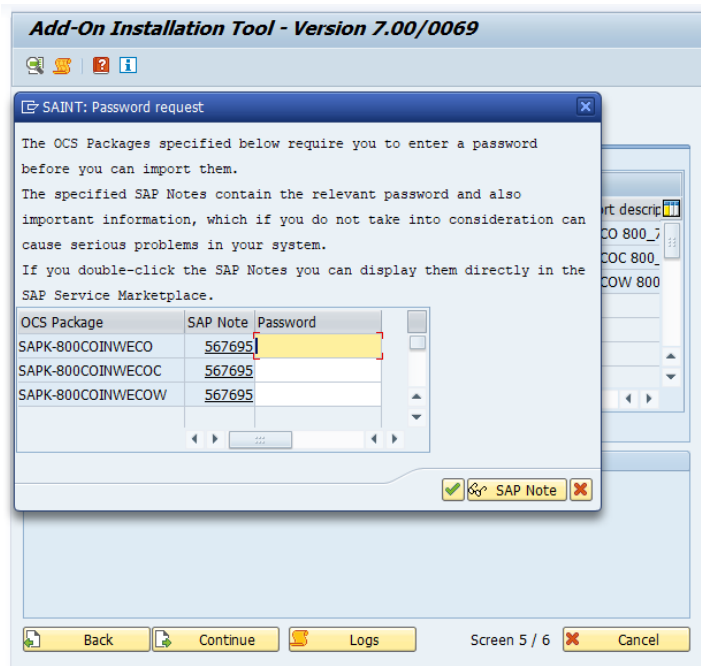


After a successful upload, the packages are shown as “installable”.



Before the installation process starts, you will be prompted to provide a password per package:

The passwords can be found in the file „Package_Codes_Release_800.txt” within your download directory.



For detailed upload instructions please follow the online documentation in transaction SAINT. You can also put the files directly on the application server. Make sure that the files are located in your EPS Inbox (.....\sapmnt\trans\eps\in). Please note, that the OCS package names are different from the file names. In case you are not familiar with SAINT, please contact your SAP Basis support team.

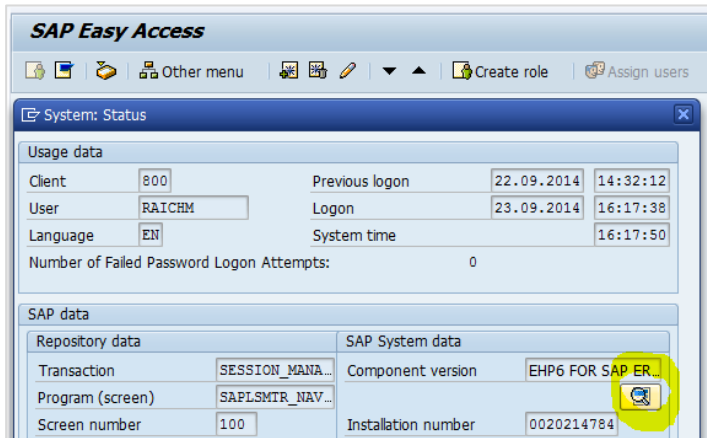
Deployment independent steps

Having loaded the packages into the respective servers, SAINT contains the installable Add-On's. Independent from the deployment scenario please **process all Add-On's within one installation process**. If this is not possible for whatever reasons make sure that Add-On WECO is processed first. Processing the other Add-On's first is not possible because of import pre-conditions delivered with the Add-On's and would result in errors because of dependencies.

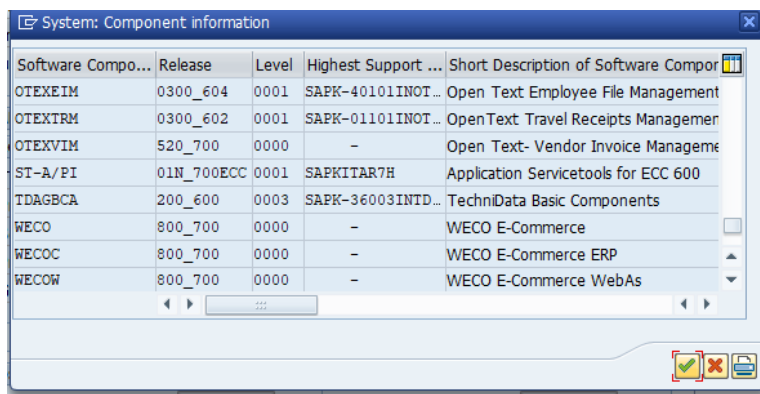
We recommend, that you enable "Abap/Screen" generation within the SAINT settings.

Installation Verification

Once the WECO Add-On's are successfully installed you can verify that via the *System->Status* information.



Using the small button in the SAP System data area you can display all installed components and SP levels.



In a **1-System** deployment all 3 components have to show up; in a **2-System** deployment the WECO component has to show up on both systems, whereas the WECOC component must show up on the ERP system and the WECOW component on the Web As System.

Import of the template configuration

WECO E-Commerce is shipped as installable Add-On. Together with the software we also ship template configuration in order to speed up the implementation project.

Configuration settings are shipped via 2 transport orders that you need to import.

You can find the transport files in the customer download folder on the WECO support server (see section *Software Download*):

WECO_E-Commerce_800_Install_Customizing_Core.zip

WECO_E-Commerce_800_Install_Customizing_Web.zip

Unzip the files and add the transport files to the import queue of the respective systems. You have to import the transports not only on the development systems, but also on your production systems. In case you feel not familiar with the TMS process, contact your SAP Basis support team.



Since the content is client dependent **set the import client accordingly** before executing the import.

1-System Deployment

Import both transport orders into your system.

2-System Deployment

- **ERP System**
Import CM1K900101 into the system.
- **Web Application Server**
Import CM1K900102 into the system.

Post Installation Activities

Installation of Support Packages

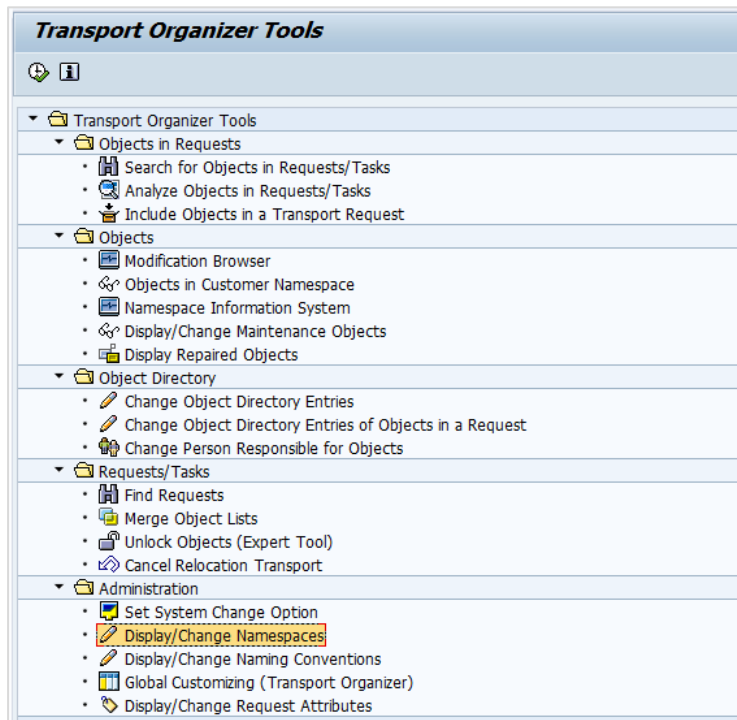
Download the latest support package from the WECO support server and install it accordingly. WECO support packages are cumulative, i.e. you only have to install the most recent support package. You can find a separate documentation to the topic “Installation of Support Packages” on the WECO support server.

Development System only

Please check the existence of the namespace **/WECO/** in your SAP development system. (CORE and WAS as well in case of 2 system landscape).

The namespace is necessary for creating customer own Business Server Page views and for implementing Hot-fixes.

Use transaction SE03:



The entry should look like this:

| Display View "Repository Namespaces": Details | |
|---|--------------------------|
| Namespace | /WECO/ |
| Namespace role | C |
| Repair License | 14351631592804358051 |
| SSCR Popup | <input type="checkbox"/> |
| SAP Standard | <input type="checkbox"/> |
| Gen. Objs Only | <input type="checkbox"/> |
| Last Changed By | SAP |
| Date | 27.08.2014 |
| Short Text | |
| Owner | |

The repair license key is: **14351631592804358051**

In case the entry does not exist – create it.

Number Range for User Requests (Core System only)

Create the number range for user registration requests on the ERP (Core) system:

Transaction: SNUM

Object: /WECO/URQ

Number range 01, Internal numbering

From No. 1000 **To No.** 1000000

Necessary post installation activities in case of upgrade to 8.00

Import of customer Z-views and Z-controllers

After successful installation you can reimport the backup of your custom BSP views and controllers into the development system using report /WECO/X_UPLOAD_BSP_VIEWS.

Therefore create a transport request to recreate the BSP Views and Controllers in the subsequent systems of your SAP landscape.

Use transaction SE80 and navigate to the following BSP-Applications:

- /WECOW_SHP1
- /WECOW_EMAIL
- /WECO/C_EMAIL
- /WECO/X_CKEDITOR.

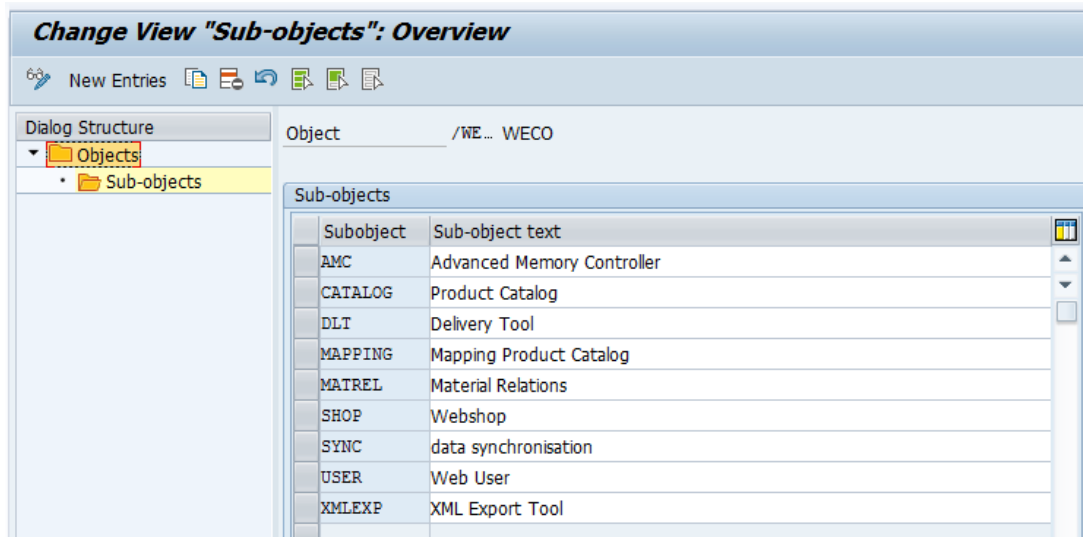
For each application mark all custom BSP views and controllers in the tree on the left-hand side. Use the right mouse button „write transport request“ to include the marked objects in the transport request you have just created.

Restore Enhancements

After a successful installation you have to re-implement the previously saved WECO enhancements. Therefore create a workbench transport request in your development system and implement the enhancements in the Z-namespace.

Checking SAP message log objects for WECO

Execute transaction SLG0 and select the object /WECO/. Then, double click on 'Sub-objects' and verify that the list of sub-objects contains at least the following entries:



Please complete any missing entries manually.

Alternatively, WECO provides a transport request with the /WECO/ object and all subobjects. You can find the transport request on the WECO support portal (<https://support.weco.at>) in the area 'Solutions' (solution #71).

Publishing of Catalogues

If the installation was successfully finished, you can publish your catalogues again. Afterwards you are able to test and release the application.

Publishing of Offline Modus Data

If your application is running offline (buffering of customizing, master data), you have to publish the data to your WebAs again. Therefore you can use following transactions on your SAP ERP core system, namely /WECO/C_061 and /WECO/C_062.

Redefine Root Views to V0

As of WECO 7.00 SP05 some BSP views have been moved from the root directory to directory V0. If you are using BSP views of the root directory which are no longer available there, please redefine them to the V0 directory.

| Objektname | Beschreibung |
|-------------------------|-----------------------------------|
| Views | |
| M1 | |
| M2 | |
| M3 | |
| M3T | |
| N1 | |
| N2 | |
| ODATA | |
| V0 | |
| V1 | |
| V2 | |
| V3 | |
| V3_oci | |
| V4 | |
| V4_eep | |
| V4_oci | |
| V4_port | |
| app1_header_delayed.htm | App Header delayed rendering |
| app1_init.htm | Einstiegsseite Frameless |
| app1_initn.htm | Einstiegsseite Frameless Neu |
| app1_meta.htm | Meta tag Generator(SEO) |
| app1_msgajax.htm | Message Handler Ajax Info Ausgabe |
| app1_navtrail.htm | Navigationspfad |
| app1_title.htm | Title Generator(SEO) |
| app_ajax_messltx.htm | Langtext zum Fehler |
| app_ajax_regio.htm | Regionen zum Land via Ajax |
| app_empty1.htm | Leere Seite |
| app_ociget.htm | OCI Eingang Iframe/Ajax Version |
| app_transl.htm | Online translation |
| cat1_body_ask.htm | Warenkorb Simulation Catalog |
| cat1_extern.htm | Externer Katalog aufrufen |
| cat1_extern_iframe.htm | Externer Katalog aufrufen Iframe |

Migrate Webuser Database Table

Release 8 comes with enhancements of the WECO webuser database table. Depending on your database system new fields may not be initialized. Therefore, execute following report on your ERP core system: `/WECO/C_MIGRATE_WEBUSR_DEALN`.

Update Apache Solr Schema File

If you are using the external search engine Apache Solr, you have to update the schema.xml file of all your cores. Afterwards you have to restart Apache Solr to apply the changes.

Update SEO htaccess file

If your application is running in SEO mode, please update your .htaccess file. The new .htaccess file is contained in your software delivery files.

Migrate manual ship-to addresses to new address book

If you have enabled manual ship-to addresses in your application you have to migrate the addresses into the new address book. Therefore you can use report `/WECO/C_MIGRATE_SHIPTO`. Run this report on your ERP core system.

Update / Generate Authorization Roles

ADVISE

This activity is only necessary if you have already created your own authorization roles for the WECO application.

After a successful installation you have to generate all WECO related authorization roles.

If you have created custom authorization roles for following authorization roles, you have to update authorization object /WECO/002 (WECO: Authorization f. display prices)

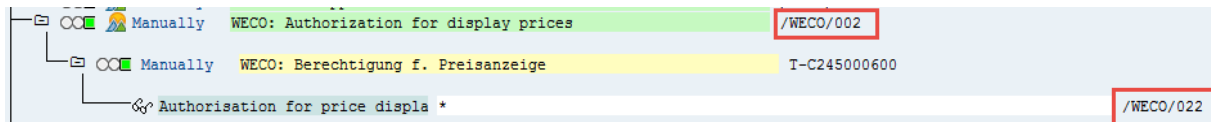
- /WECO/OMC_ALL
- /WECO/SHP_B2B_ALL
- /WECO/SHP_B2B_ANONYM
- /WECO/SHP_B2C_ALL

Therefore, first remove authorization object /WECO/002 and manually add it again. Then you have to add the authorization values and you can generated the role.

ADVISE

You can show the technical names by selecting 'Utilities → Technical names on'.

Please ensure that after updating authorization object /WECO/002 the authorization field /WECO/022 is visible. (Former /WECO/022 was called /WECO/002)



Optional: Using Address Dropdown in Basket

The new address book feature replaces the dropdown in the basket with an address book popup. If you'd like to switch back to the old dropdown, instead of using the new address book popup, you have to update following files, in case that you've redefined one of them:

BSP Views:

V3/bas1_body.htm

V3/bas1_header_incl.htm

V3/bas1_header_readonly_incl.htm

JavaScript

MIME Repository: S4/basket1.js

Licensing

In order to enable the WECO software components you need a license key. You will find a license transport order in your customer specific download folder. Please download and import the transport

request. You have to import the transport throughout your whole system landscape where WECO components are deployed.

Glossary

Abbreviations & Terms used in this document

| | |
|------------------------|--|
| BSP | SAP Business Server Pages are a SAP technology, which allows to develop dynamic web application with ABAP. |
| Core System | ERP System on which SAP SD and MM are running |
| IMG | WECO Implementation Guide |
| View | A BSP View is part of SAP BSP and used to dynamically generate HTML code. |
| Web AS | SAP Web Application Server aka SAP_BASIS. All BSP components run on this component. |
| SAR File | Software archive – SAP specific file format used for distribution and installation of Add-Ons. |
| Sandbox System | A dedicated system which is used to test specific functionality. It is reset afterwards. |
| Support Package | Installable package, which contains software corrections for WECO components |