



# Upgrade Guide

## **WECO E-Commerce™** **8.00**






**SAP® Certified**  
Powered by SAP NetWeaver®

**SAP® Certified**  
Integration with Applications on SAP HANA®

**Release 8.00**

**Version 1.0 Date 09/05/2018**

## Icons

Icon	Description
	Caution
	Example
	Advise
	Source Code
	Tipp

## Copyright

Copyright (©) 2010-2018 WECO Software GmbH. All rights reserved.

No part of this publication may be reproduced or transmitted in any form or for any purpose without the express permission of WECO Software GmbH. The information contained herein may be changed without prior notice.

WECO E-Commerce Sales & Service, WECO E-Commerce Procurement and WECO E-Commerce Mobile are trademarks of WECO Software GmbH.

SAP, SAP ERP, SAP NetWeaver, ABAP, BAPI and other SAP products and services mentioned herein as well as their respective logos are trademarks or registered trademarks of SAP AG in Germany or an SAP affiliate company.

All other product and service names mentioned are the trademarks of their respective companies. Data contained in this document serves informational purposes only.

## Index

Index .....	3
Introduction .....	4
Content of WECO Upgrade Packages .....	4
WECO Shared Components .....	4
WECO Web Components .....	4
WECO Core Components .....	4
Software Download .....	5
Upgrade .....	6
Check prerequisites .....	6
Preparation .....	6
Save Customer Z-views and Z-controllers .....	6
Save Enhancements .....	6
Unpublish Catalogues .....	6
Add-On Upgrade .....	6
1-System Deployment .....	7
2-System Deployment .....	7
Deployment independent steps .....	8
Installation Verification .....	8
Import of the template configuration .....	10
1-System Deployment .....	10
2-System Deployment .....	10
Post Installation Activities .....	10
Import of customer Z-views and Z-controllers .....	10
Restore Enhancements .....	11
Installation of Support Packages .....	11
Checking SAP message log objects for WECO .....	11
Publishing of Catalogues .....	11
Publishing of Offline Modus Data .....	11
Redefine Root Views to V0 .....	12
Update Apache Solr Schema File .....	12
Update SEO htaccess file .....	12
Migrate manual ship-to addresses to new address book .....	12
Update / Generate Authorization Roles .....	13
Optional: Using Address Dropdown in Basket .....	13
Glossary .....	14

## Introduction

This documentation describes all necessary activities to **upgrade** from WECO E-Commerce Release 7.0.x to Release 8.00.

Due to necessary pre- and post activities, we suggest that you plan a downtime for your productive web shop. The needed amount of time depends on the installation time and afterwards on the time needed for re-publishing of the catalogues.

## Content of WECO Upgrade Packages

WECO E-Commerce contains the following modules:

- Sales & Service
- Procurement
- Mobile

A WECO E-Commerce upgrade is delivered in 3 different packages (.SAR files). Those can be installed in the appropriate systems with the SAP Add-On Installation Tools (SAINT).

### WECO Shared Components

Contains components, which are used by more modules.

### WECO Web Components

Contains all components, which are necessary for the frontend application, like BSP application and their views.

### WECO Core Components

Contains ERP components, like the catalogue- and attribute set maintenance tools, as well as WECO APIs for the core system.

## Software Download

You can use your already known credentials to access the WECO support portal and download the installation packages using the following URL: <https://support.weco.at/download/customer>

### Hint:

Path /customer is used as an example in this document and has to be replaced by your own company token. You will find your individual download link in the e-mail.

Contents of folder /download/customer/WECO\_E\_Commerce\_700\_800\_Upgrade/  
Please choose a file to view or download.

Download File Description	KB	Type	Date	Time
<a href="#">package_codes_7xx_800.txt</a>	1K	Text Document	05.09.2018	09:46:29
<a href="#">upgradeinstallationguide_700_800_en.pdf</a>	768K	PDF File	05.09.2018	13:29:16
<a href="#">weco_e_commerce_800_aou_core_components.zip</a>	8864K	ZIP File	05.09.2018	13:20:07
<a href="#">weco_e_commerce_800_aou_customizing_core.zip</a>	641K	ZIP File	05.09.2018	11:56:49
<a href="#">weco_e_commerce_800_aou_customizing_web.zip</a>	26K	ZIP File	05.09.2018	11:57:32
<a href="#">weco_e_commerce_800_aou_shared_components.zip</a>	3922K	ZIP File	05.09.2018	13:20:18
<a href="#">weco_e_commerce_800_aou_web_components.zip</a>	15119K	ZIP File	05.09.2018	13:20:24

**Warning: You must have prior authorization to access this download page. All connections are logged and monitored. By connecting to this system you fully consent to all monitoring. Unauthorized access or downloads will be prosecuted to the full extent of the law.**

After providing your credentials you can access the download directory where you can find the .ZIP files as well as the latest Installation Guide.

Please download the .ZIP files to your local machine for further processing (clicking on the file will start the download process).

After the download extract the .SAR files from the ZIP archives.



Please note that the software download is only permitted for customer staff members within the customer's company network. You may neither hand on access data nor transfer WECO software to 3rd parties.

# Upgrade

## Check prerequisites

Please ensure, that all your systems meet the minimum SAP component versions, otherwise you cannot install the packages.



Basically, with WECO E-Commerce 8.00 the Add-On is removable. If you plan to uninstall the Add-On, please **get in contact with the WECO support before you start**.

## Preparation

### Save Customer Z-views and Z-controllers



Customer Z-views and Z-controllers are automatically deleted during the installation of release 8.00. Hence, you have to conduct following activities before the installation:

Please save all customer BSP views and controllers (Z-views, Z-controllers) with the report `/WECOW_DOWNL_BSP_VIEWS` **before you install release 8.00**.

Execute the report for following BSP applications:

- `/WECOW_SHP1`
- `/WECOW_EMAIL`
- `/WECO/C_EMAIL`
- `/WECO/X_CKEDITOR`

This report transfers all your customer views to a directory on your local PC. After a successful installation of release 8.00, you can restore your customer views with the report `/WECOW_UPLOD_BSP_VIEWS` → Import of customer Z-views and Z-controllers.

### Save Enhancements

Starting with WECO E-Commerce Release 8.00 enhancements for BSP Runtime and SAP variant configuration will no longer be provided by default. They will be deleted during an upgrade.

Therefore please save the following enhancements **before you install release 8.00**.

- Enhancement `/WECOW_BSP_RUNTIME_SEO`  
Class `CL_BSP_RUNTIME`, Method `ON_REQUEST_LEAVE` (End)
- Enhancement `/WECO/SAPCONFIG_LANGU`  
Function module `CEIO_SET_OPTIONS` (End)
- Enhancement `/WECO/SAPCONFIG_CONSTR`  
Function module `CEIO_DDB_HAS_VALUES_INTERNAL` (End)

After a successful upgrade you can implement the enhancements in your Z-namespace again.

### Unpublish Catalogues

Before you start with the installation, you have to unpublish all catalogues. You can use transaction `/WECO/C_050`. Next run report `/WECOW_UNLOAD_AMC`.

## Add-On Upgrade

The upload and installation of the WECO Software upgrades is done via transaction **SAINT** in SAP. You have to run the transaction in client 000.

Depending on the deployment scenario, you have to upload following files:

## 1-System Deployment

Upload **all .SAR files** in transaction SAINT to your ERP System.

Installable Add-On packages (SAINT):

**WECO, WECOC, WECOW**

## 2-System Deployment

- **ERP System**

Load file "WECO\_EC\_800\_AOU\_Core\_Comp.SAR" and file "WECO\_EC\_800\_AOU\_Shared\_Comp.SAR" into your SAP ERP system.

Installable Add-On packages (SAINT):

**WECO, WECOC**

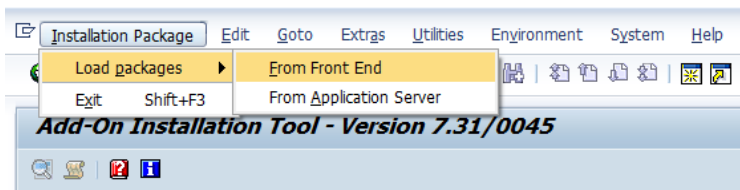
- **Web Application Server**

Load file "WECO\_EC\_800\_AOU\_Shared\_Comp.SAR" and file

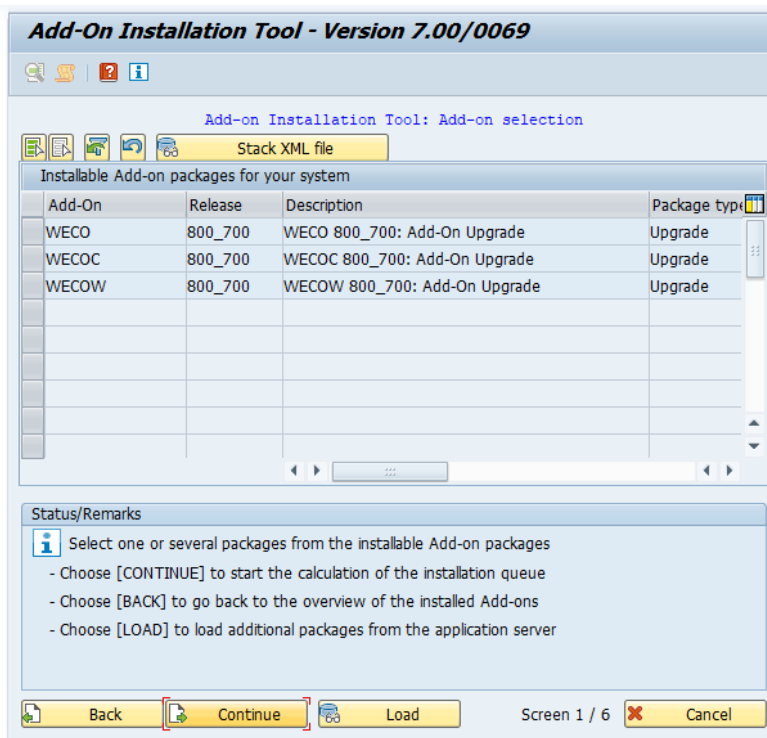
"WECO\_EC\_800\_AOU\_Web\_Comp.SAR" into your SAP Web Application server.

Installable Add-On packages (SAINT):

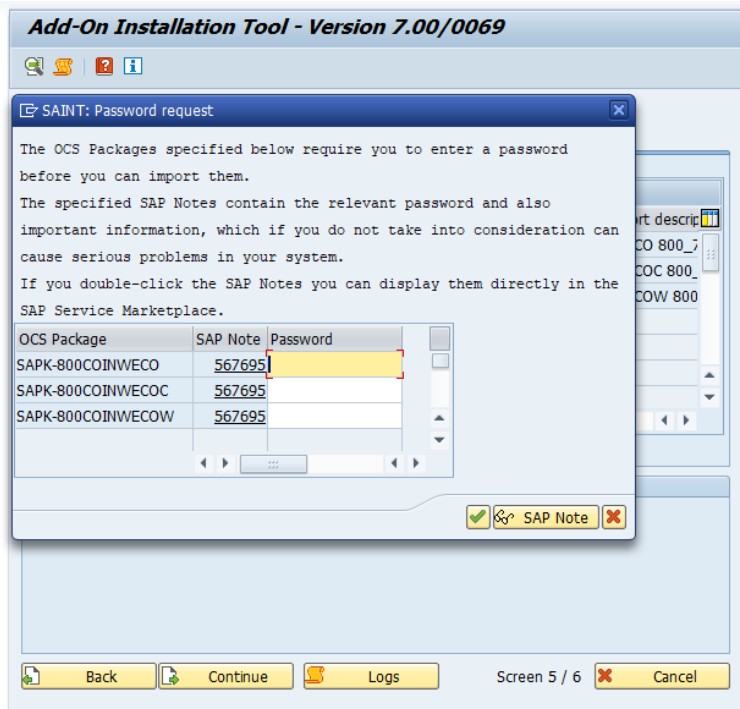
**WECO, WECOW**



After a successful upload, the packages are shown as „installable“.



Before you start the installation, you have to provide a password for each package. The passwords can be found in the file „Package\_Codes\_Release\_700\_800.txt” within your download directory.



For detailed upload instructions please follow the online documentation in transaction SAINT. You can also put the files directly on the application server. Make sure that the files are located in your EPS Inbox (.....\sapmnt\trans\eps\in). Please note, that the OCS package names are different from the file names. In case you are not familiar with SAINT, please contact your SAP Basis support team.

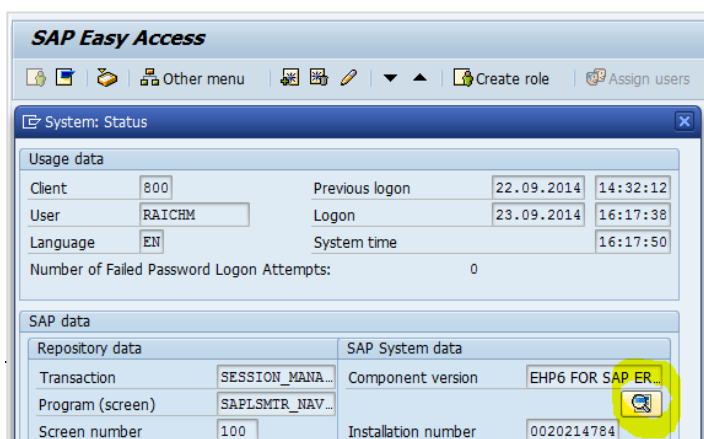
## Deployment independent steps

Having loaded the packages into the respective servers, SAINT contains the installable Add-On's. Depending on your chosen scenario, please **process all Add-On's within one installation process**. If this is not possible for whatever reasons make sure that Add-On WECO is processed first. Processing the other Add-On's first is not possible because of import pre-conditions delivered with the Add-On's and would result in errors because of dependencies.

We recommend, that you enable "Abap/Screen" generation within the SAINT settings.

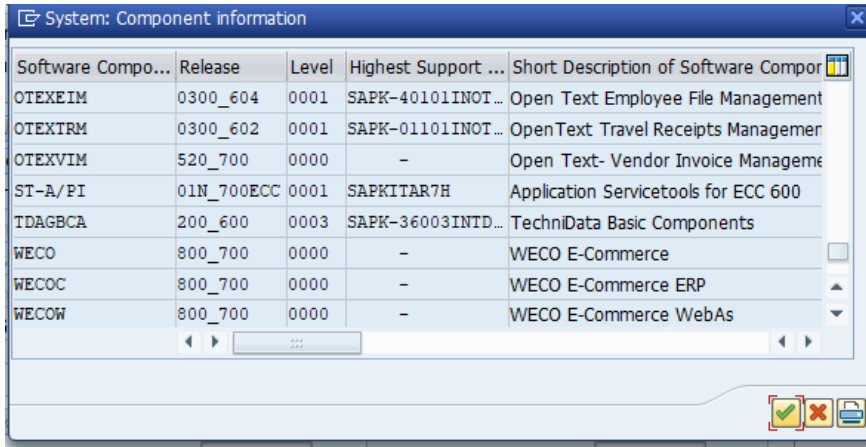
## Installation Verification

Once the WECO Add-On's are successfully installed you can verify that via the *System* → *Status* information.





Using the small button in the SAP System data area you can display all installed components and SP levels.



Software Compo...	Release	Level	Highest Support ...	Short Description of Software Compor
OTEXEIM	0300_604	0001	SAPK-40101INOT...	Open Text Employee File Management
OTEXTRM	0300_602	0001	SAPK-01101INOT...	OpenText Travel Receipts Managemen
OTEXVIM	520_700	0000	-	Open Text- Vendor Invoice Manageme
ST-A/PI	01N_700ECC	0001	SAPKITAR7H	Application Servicetools for ECC 600
TDAGBCA	200_600	0003	SAPK-36003INTD...	TechniData Basic Components
WECO	800_700	0000	-	WECO E-Commerce
WECOC	800_700	0000	-	WECO E-Commerce ERP
WECOW	800_700	0000	-	WECO E-Commerce WebAs

In a **1-System** deployment all 3 components have to show up; in a **2-System** deployment the WECO component has to show up on both systems, whereas the WECOC component must show up on the ERP system and the WECOW component on the Web As System.

## Import of the template configuration

WECO E-Commerce is shipped as installable Add-On. Together with the software we also ship template configuration in order to speed up the implementation project.

Configuration settings are shipped via 2 transport orders that you need to import.

You can find the transport files in the customer download folder on the WECO support server (see section *Software Download*):

**WECO\_E-Commerce\_800\_AOU\_Customizing\_Core.zip**

**WECO\_E-Commerce\_800\_AOU\_Customizing\_Web.zip**

Unzip the files and add the transport files to the import queue of the respective systems. You have to import the transports not only on the development systems, but also on your production systems. In case you feel not familiar with the SAP TMS process, contact your SAP Basis support team.

Since the content is client dependent **set the import client accordingly** before executing the import.



The content of transport orders is client-dependent. Make sure you use the right client (customizing client) before you start the import.

### 1-System Deployment

Import both transport orders into your system.

### 2-System Deployment

- **ERP System**  
Import CM1K900100 into the system.
- **Web Application Server**  
Import CM1K900099 into the system.

## Post Installation Activities

### Import of customer Z-views and Z-controllers

After successful upgrade you can reimport the backup of your custom BSP views and controllers into the development system using report `/WECO/W_UPLOAD_BSP_VIEWS`.

Therefore create a transport request to recreate the BSP Views and Controllers in the subsequent systems of your SAP landscape.

Use transaction SE80 and navigate to the following BSP-Applications:

- `/WECO/W_SHP1`
- `/WECO/W_EMAIL`
- `/WECO/C_EMAIL`
- `/WECO/X_CKEDITOR`.

For each application mark all custom BSP views and controllers in the tree on the left-hand side. Use the right mouse button „write transport request“ to include the marked objects in the transport request you have just created.

## Restore Enhancements

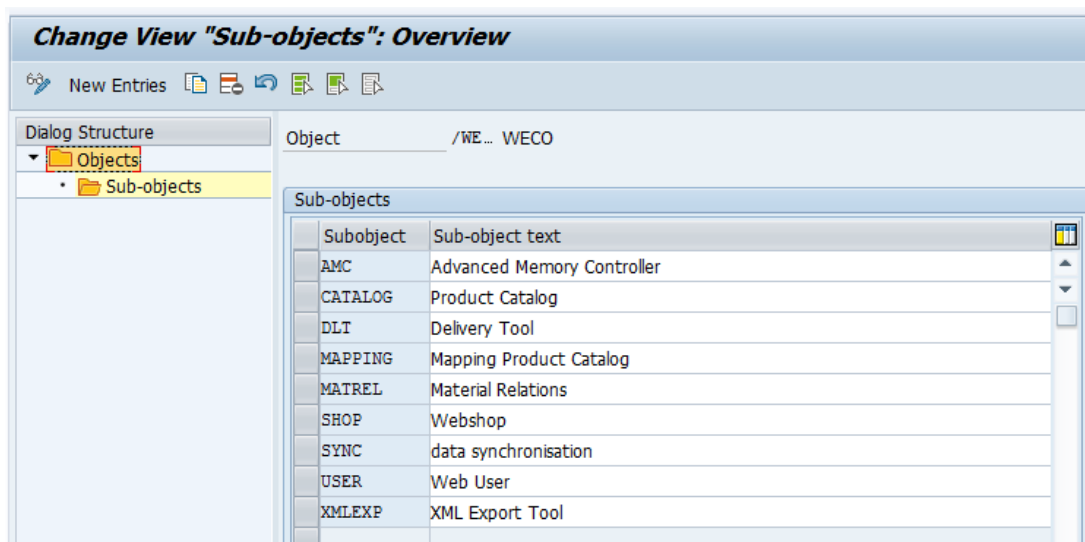
After a successful upgrade you have to re-implement the previously saved WECO enhancements. Therefore create a workbench transport request in your development system and implement the enhancements in the Z-namespace.

## Installation of Support Packages

Download the most recent support package from WECO support server and install it. WECO support packages are cumulative, i.e. you only have to install the most recent support package. You can find a separate documentation regarding the topic "Installation of Support Packages" on the WECO support server.

## Checking SAP message log objects for WECO

Execute transaction SLG0 and select the object /WECO/. Then, double click on 'Sub-objects' and verify that the list of sub-objects contains at least the following entries:



Please complete any missing entries manually.

Alternatively, WECO provides a transport request with the /WECO/ object and all subobjects. You can find the transport request on the WECO support portal (<https://support.weco.at>) in the area 'Solutions' (solution #71).

## Publishing of Catalogues

If the installation was successfully finished, you can publish your catalogues again. Afterwards you are able to test and release the application.

## Publishing of Offline Modus Data

If your application is running offline (buffering of customizing, master data), you have to publish the data to your WebAs again. Therefore you can use following transactions on your SAP ERP core system, namely /WECO/C\_061 and /WECO/C\_062.

## Redefine Root Views to V0

As of WECO 7.00 SP05 some BSP views have been moved from the root directory to directory V0. If you are using BSP views of the root directory which are no longer available there, please redefine them to the V0 directory.

Objektname	Beschreibung
Views	
M1	
M2	
M3	
M3T	
N1	
N2	
ODATA	
V0	
V1	
V2	
V3	
V3_oci	
V4	
V4_eep	
V4_oci	
V4_port	
app1_header_delayed.htm	App Header delayed rendering
app1_init.htm	Einstiegsseite Frameless
app1_initn.htm	Einstiegsseite Frameless Neu
app1_meta.htm	Meta tag Generator(SEO)
app1_msgajax.htm	Message Handler Ajax Info Ausgabe
app1_navtrail.htm	Navigationspfad
app1_title.htm	Title Generator(SEO)
app_ajax_messlxt.htm	Langtext zum Fehler
app_ajax_regio.htm	Regionen zum Land via Ajax
app_empty1.htm	Leere Seite
app_ociget.htm	OCI Eingang Iframe/Ajax Version
app_transl.htm	Online translation
cat1_body_ask.htm	Warenkorb Simulation Catalog
cat1_extern.htm	Externer Katalog aufrufen
cat1_extern_iframe.htm	Externer Katalog aufrufen Iframe

### ADVISE

All of the following steps are only necessary if you are upgrading from a version lower than 7.04 (< 7.04).

### Update Apache Solr Schema File

If you are using the external search engine Apache Solr, you have to update the schema.xml file of all your cores. Afterwards you have to restart Apache Solr to apply the changes.

### Update SEO htaccess file

If your application is running in SEO mode, please update your .htaccess file. The new .htaccess file is contained in your software delivery files.

### Migrate manual ship-to addresses to new address book

If you have enabled manual ship-to addresses in your application you have to migrate the addresses into the new address book. Therefore you can use report /WECO/C\_MIGRATE\_SHIPTO. Run this report on your ERP core system.

## Update / Generate Authorization Roles

### ADVISE

This activity is only necessary if you have already created your own authorization roles for the WECO application.

After a successful installation you have to generate all WECO related authorization roles.

If you have created custom authorization roles for following authorization roles, you have to update authorization object /WECO/002 (WECO: Authorization f. display prices)

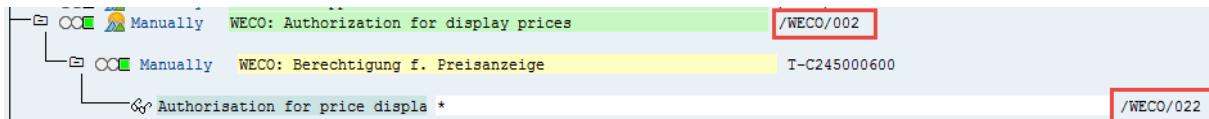
- /WECO/OMC\_ALL
- /WECO/SHP\_B2B\_ALL
- /WECO/SHP\_B2B\_ANONYM
- /WECO/SHP\_B2C\_ALL

Therefore, first remove authorization object /WECO/002 and manually add it again. Then you have to add the authorization values and you can generated the role.

### ADVISE

You can show the technical names by selecting 'Utilities → Technical names on'.

Please ensure that after updating authorization object /WECO/002 the authorization field /WECO/022 is visible. (Former /WECO/022 was called /WECO/002)



## Optional: Using Address Dropdown in Basket

The new address book feature replaces the dropdown in the basket with an address book popup. If you'd like to switch back to the old dropdown, instead of using the new address book popup, you have to update following files, in case that you've redefined one of them:

### BSP Views:

V3/bas1\_body.htm

V3/bas1\_header\_incl.htm

V3/bas1\_header\_readonly\_incl.htm

### JavaScript

MIME Repository: S4/basket1.js

## Glossary

### Abbreviations & Terms used in this document

<b>BSP</b>	SAP Business Server Pages are a SAP technology, which allows to develop dynamic web application with ABAP.
<b>Core System</b>	ERP System on which SAP SD and MM are running
<b>IMG</b>	WECO Implementation Guide
<b>View</b>	A BSP View is part of SAP BSP and used to dynamically generate HTML code.
<b>Web AS</b>	SAP Web Application Server aka SAP_BASIS. All BSP components run on this component.
<b>SAR File</b>	Software archive – SAP specific file format used for distribution and installation of Add-Ons.
<b>Sandbox System</b>	A dedicated system which is used to test specific functionality. It is reset afterwards.
<b>Support Package</b>	Installable package, which contains software corrections for WECO components